

Type F combination lock

USER INSTRUCTIONS

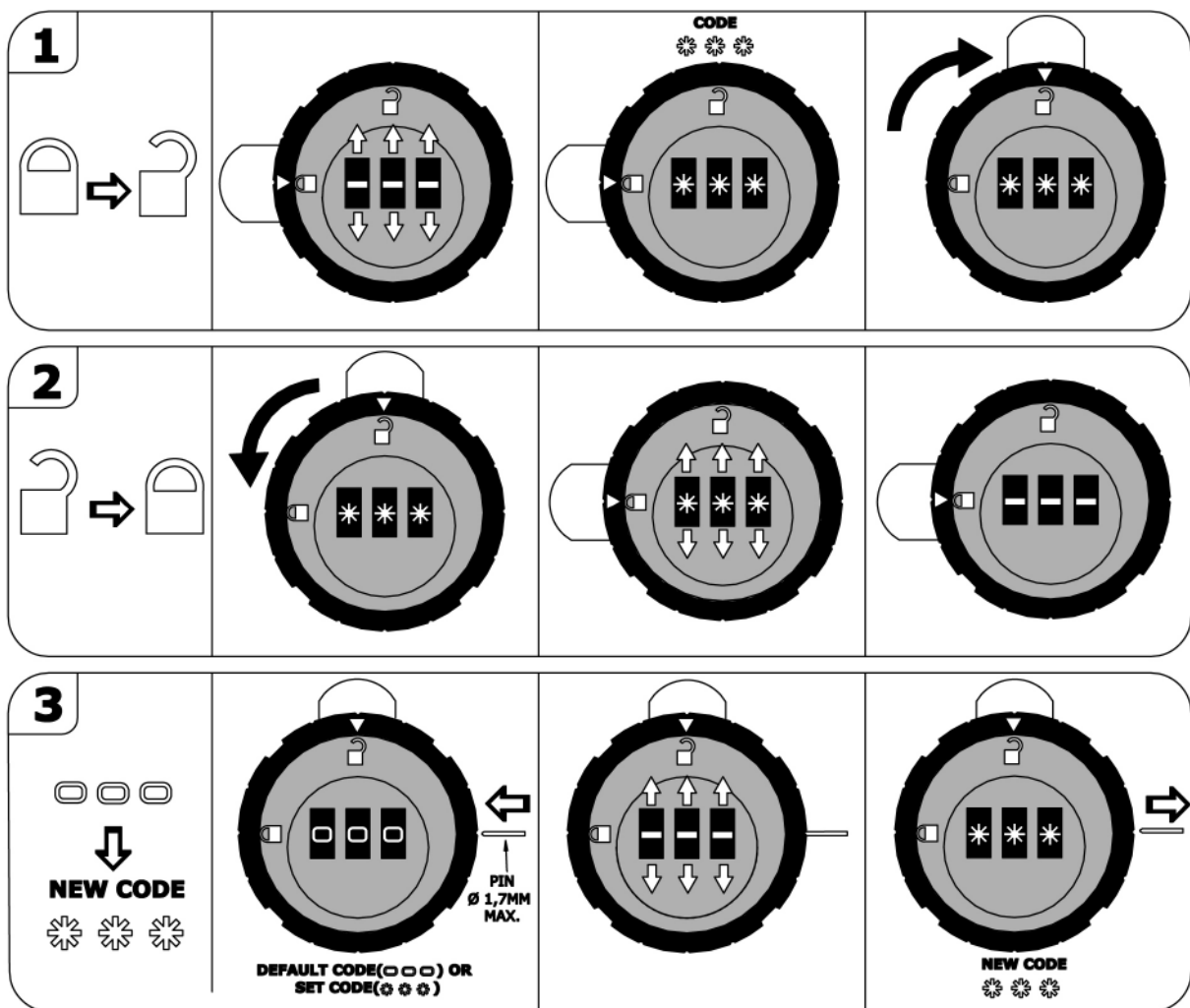


For further information please contact your probe distributor

PR *O* **BE** .uk.com

storage solutions worth looking into..

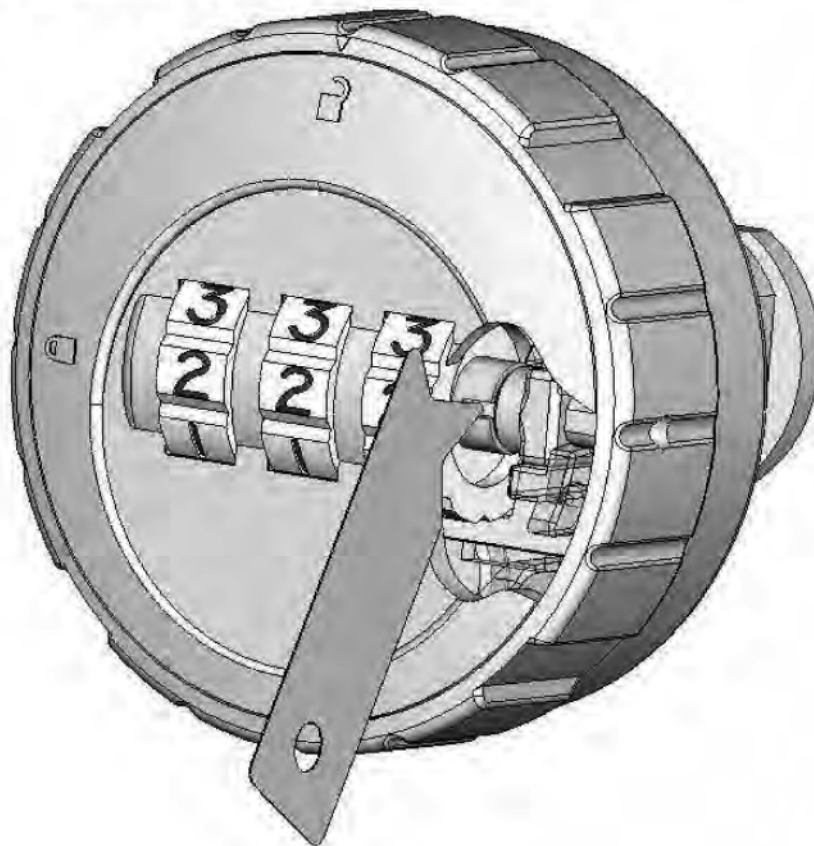
- ❑ On delivery, lock is factory set to the default code **000**. For safety reasons set lock immediately to your own personal code (see point 3 below)
- ❑ To set the code use a solid PIN with a diameter of max. 1.7mm. Do not use a wood pin!
- ❑ Do not lubricate the code wheels
- ❑ Make sure that cam moves freely while operating the lock
- ❑ lock operable within a temperature range of 0° to 50°C (32°F to 120°F)
- ❑ Do not expose lock to environmental influences (moisture, fire, dust, etc)
- ❑ Clean lock with a damp cloth. Do not use chemical products!
- ❑ Do not insert foreign objects in the code wheels
- ❑ Cam is fixed by self-tapping screw. Torque to tighten screw max.2Nm
- ❑ Maximum panel thickness 12mm



For further information please contact your probe distributor

PROCEDURE TO OPEN LOCK IN CASE OF **CODE LOSS**

- Step 1 Insert the feeler blade into the gap to the right of each code wheel
- Step 2 Turn the code wheel slowly and move the point of the feeler blade over the radius of the axis until the recess is found
- Step 3 Deduct two from the number shown on each wheel to find the correct code:
Code found 2 2 2 - correct code 0 0 0



For further information please contact your probe distributor

PR *O* **BE** .uk.com

storage solutions worth looking into..